



Tel : 82-2-2108-8070
Homepage : www.cmri.co.kr
www.chemlocus.co.kr
E-mail : consulting@chemlocus.com

(2008 7)

1)

가

가 가

가

2)

: PCB, EMC

가

(2004~2007)

(2007)

m.t.

160,000

120,000

80,000

40,000

0

-40,000

2004

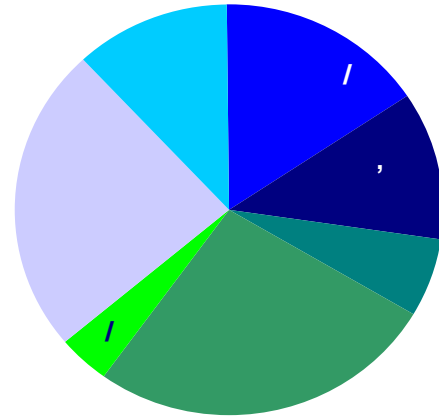
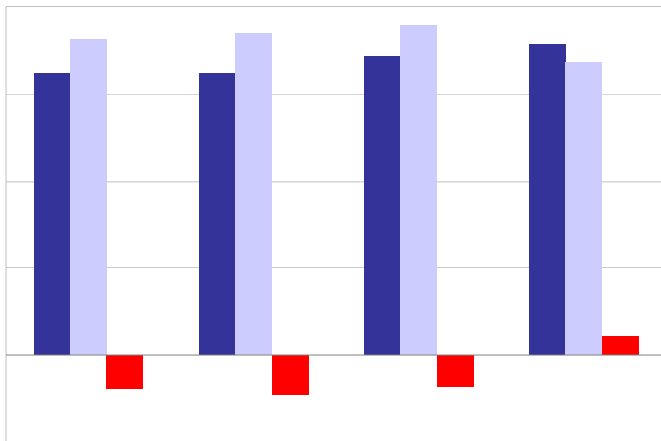
2005

2006

2007



S&D Balance



1) BASF

2008 3

BASF

180

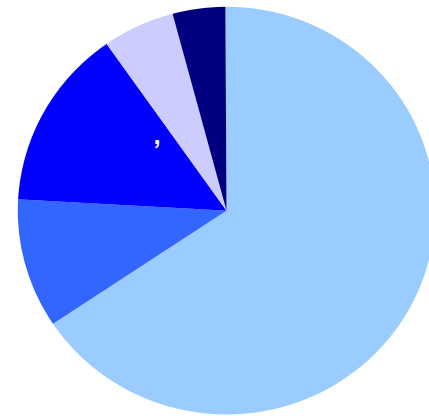
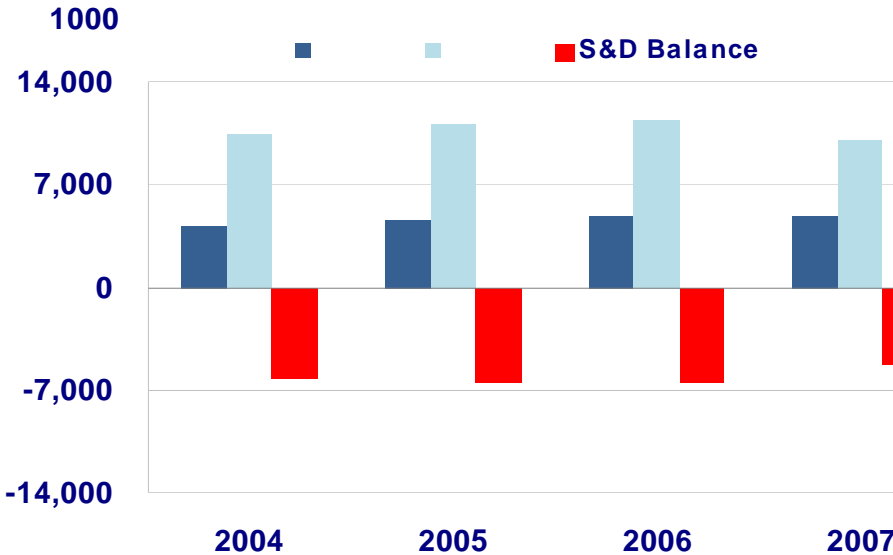
가

2)

- ▶ : 10 - 2008 MMA 가 .
- ▶ - , 가 -> .
- ▶ BD 5 - 4 2~3 .
- ▶ - 70% . -> .
- ▶ - .

(2004~2007)

(2007)

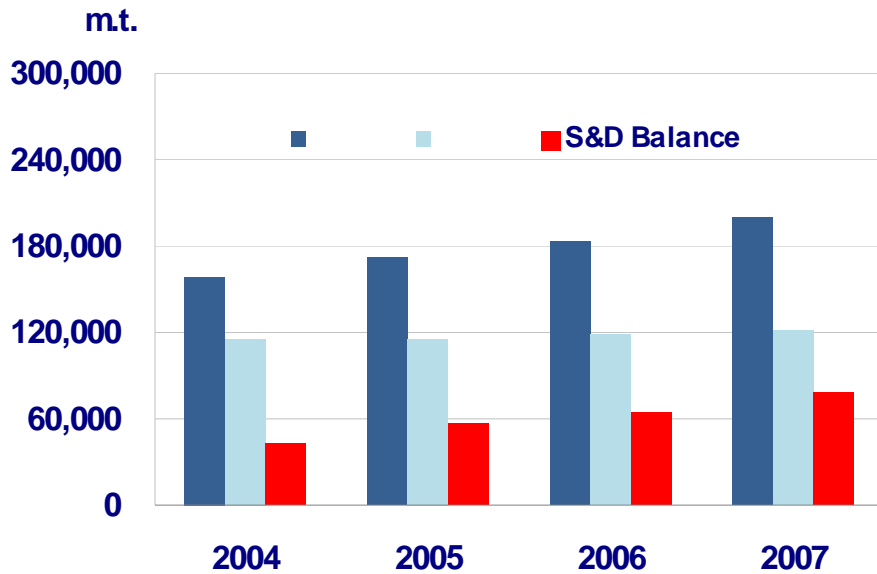


1) , , , , ,

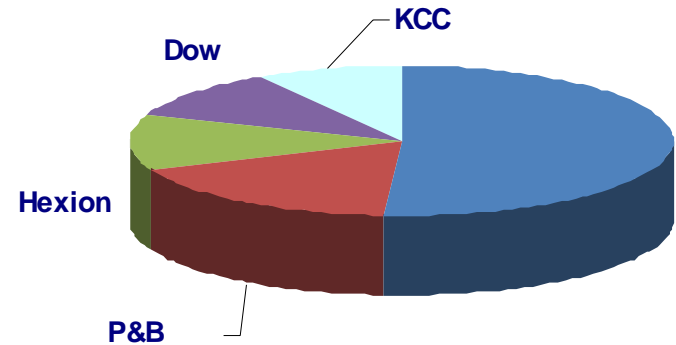
2) 가:

- ▶ : 55% . PCB, EMC Non- 20% 가 .
- ▶ : 2010 가 .
- ▶ 가: .

(2004~2007)



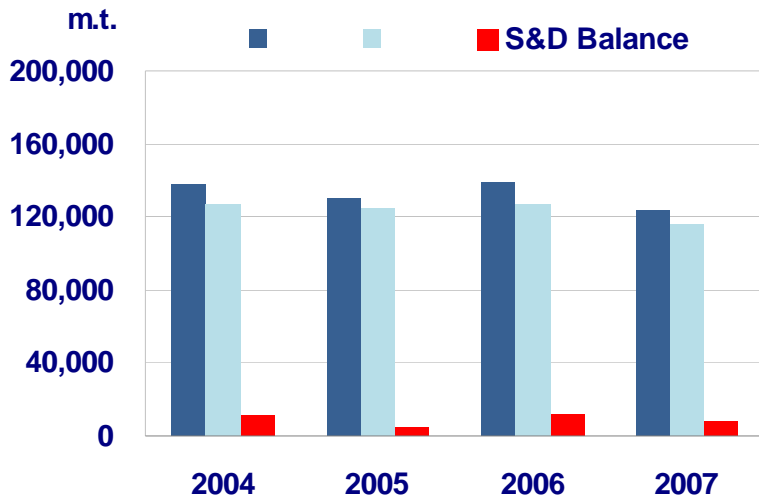
(2007)



1) , , , , 가 .
 - 가 , 가 -
 -

2) - 가
 - 52% (69%).
 - : ,
 - :

(2004~2007)



(2007)



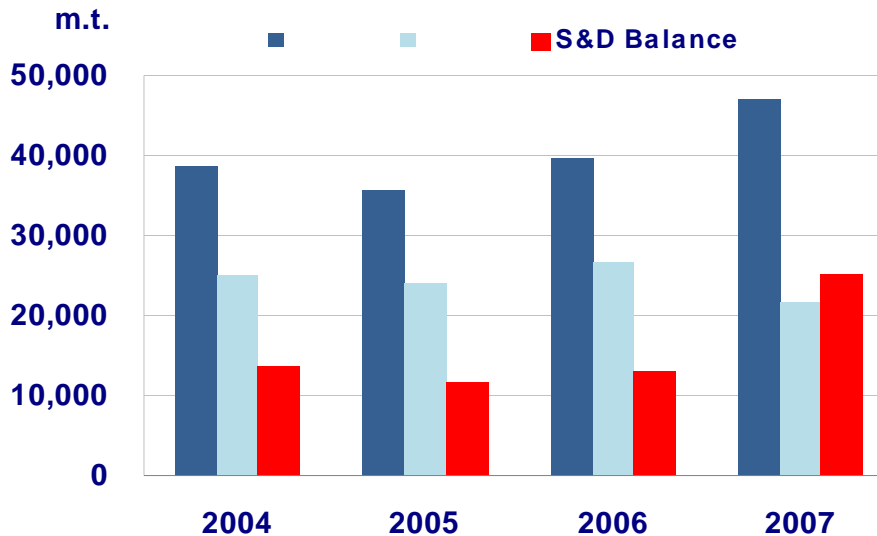
1) LG

- SAP
- NSC, Formosa 가

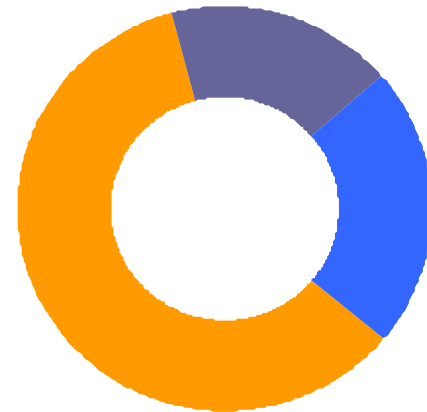
2) 90% + = 95%

- 가

(2004~2007)



(2007)



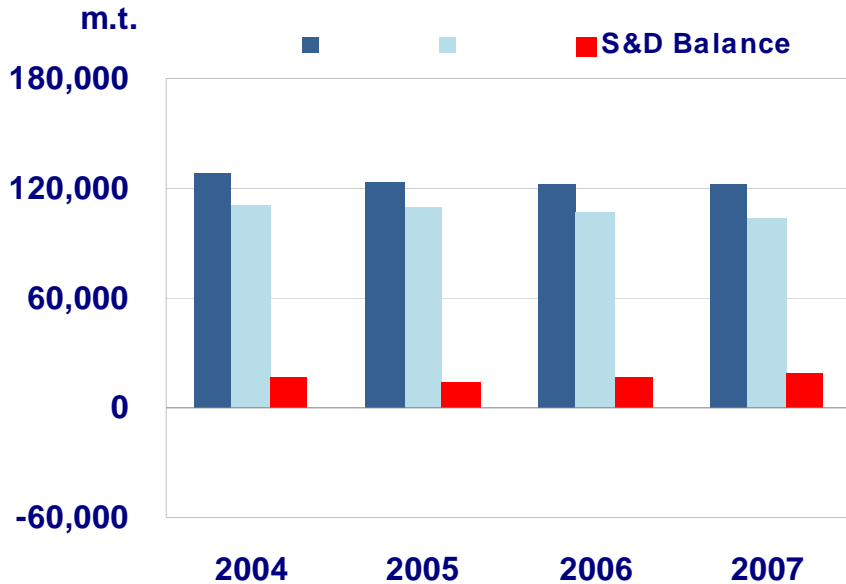
1) , 가

- ▶ 3 60% , 10 .
- ▶

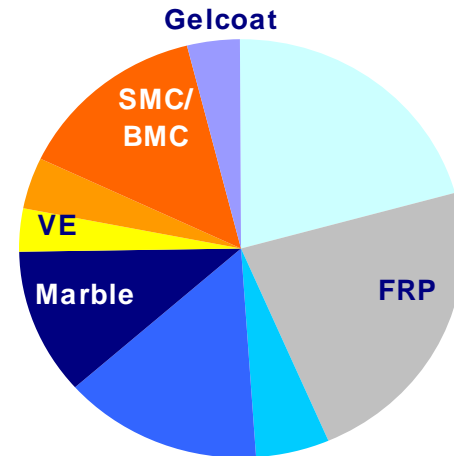
2)

- ▶ 20% 가 - , , .
- ▶ () -
- ▶ VE () - 가 .
- ▶ - 5000 , 2008 가 .

UPR (2004~2007)



UPR (2007)

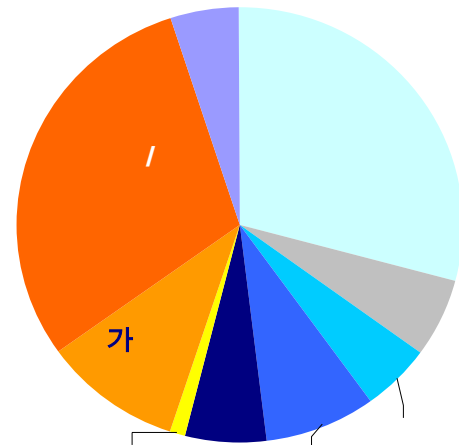
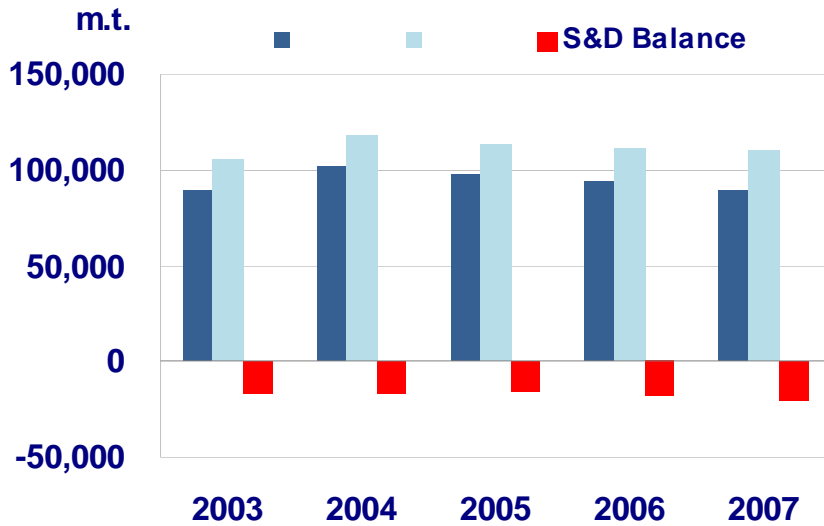


1) : => 가 ()

2) 가
 ▶ : - 가
 ▶ , :
 ▶ , 가
 ▶ ,
 ▶ ,

(2003~2007)

(2007)



CMRI

Publication

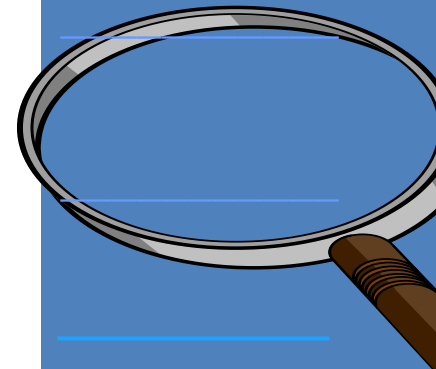
Wire Information Service

Chem Consulting

- ▶ Chemical Journal (since 1991) (Weekly chemical market magazine)
- ▶ Chemical Yearbook
- ▶ Petrochemical Industry book

- ▶ ChemLocus.co.kr
- ▶ Chem Market News DB
- ▶ Petrochemical Price DB
- ▶ Petrochemical S&D DB
- ▶ Chemical Company DB
- ▶ Seminar/Conference

- ▶ Market Analysis
- ▶ Demand Forecasting
- ▶ Price Forecasting
- ▶ New Business Development
- ▶ Feasibility Study
- ▶ Management Strategy
- ▶ Policy & Strategy Establishing



Expertise Industry

Products

Petrochemical

Olefins(C1, C2, C3, C4 Derivatives.), Aromatics, Synthetic Fiber Materials...

Performance Polymer

Electronic/Automobile/Construction Polymers, Engineering Plastics, Super EP, TPE ...

Specialty Chemicals

Electronic Chemicals, Plastic Additives, Catalyst, Environment Chemicals...

Fine Chemicals

Paint & coating, Adhesive, Surfactant, Pigment, Chloro-Alkali, Silicone, Fine Ceramic...

Chemical Market Research Inc.

Phone: +82-2 2108-8070

Fax: +82-2 2108-8077

consulting@chemlocus.com

: 2008 7

: 89Page

가 : 55 (VAT)

:

www.cmri.co.kr

www.chemlocus.co.kr

(2008)

CMRI

