

“ ? ”

가 4

2001 3/4

4 8368 323

0.19%p

가

가 224

69.3%,

가 92

28.5%,

가 7

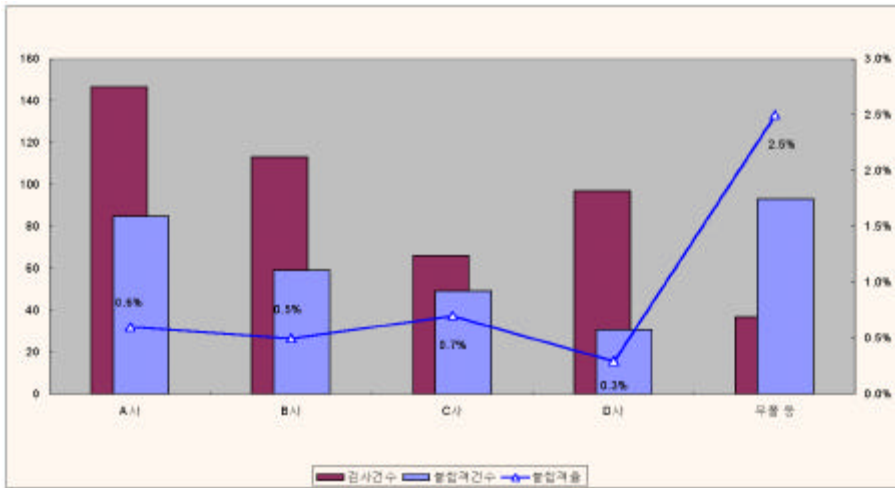
2.2%

2.54%

4

0.53%

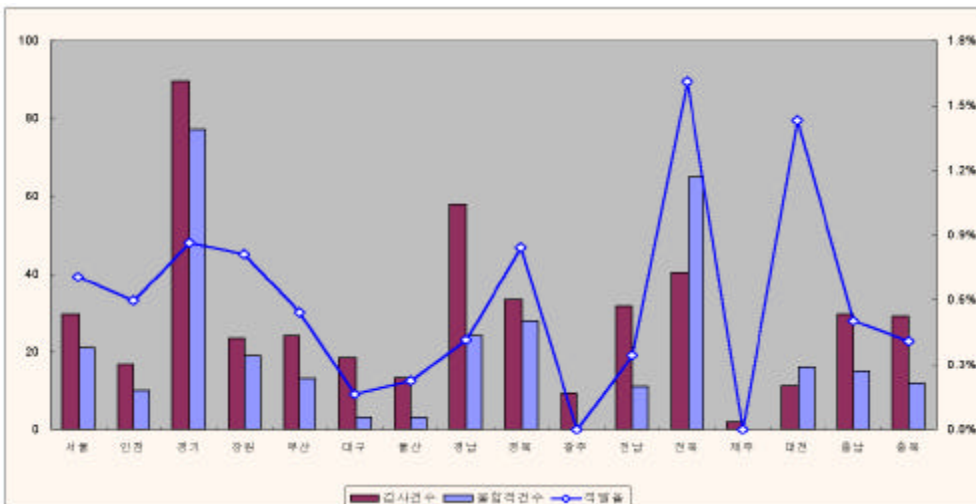
2.01%p



가 77 ,

65 ,

16



가 . 가 가
 가 . 가

(:)

				%		
1997	9,928	47,566	178	0.37	103	75
1998	10,163	50,204	235	0.46	154	81
1999	10,390	53,291	423	0.79	332	91
2000	10,449	57,769	276	0.48	230	46
2000. 1-9	10,304	43,034	205	0.48	180	25
2001. 1-9	10,454	48,368	323	0.67	223	100

, 가 , 3
 가

(: , %)

	2001 1-9				
	2,964	21	0.71%	20	0.67%
	1,678	10	0.60%	8	0.48%
	8,952	77	0.86%	61	0.68%
	2,338	19	0.81%	10	0.43%
	2,395	13	0.54%	7	0.29%
	1,838	3	0.16%	3	0.16%
	1,328	3	0.23%	1	0.08%
	5,776	24	0.42%	23	0.40%
	3,332	28	0.84%	28	0.84%
	934	-	-	-	-
	3,175	11	0.35%	11	0.35%
	4,038	65	1.61%	25	0.62%
	192	-	-	-	-
	1,120	16	1.43%	16	1.43%
	2,966	15	0.51%	2	0.07%
	2,929	12	0.41%	8	0.27%
	45,955	317	0.69%	223	0.49%