

“

!!!”

,

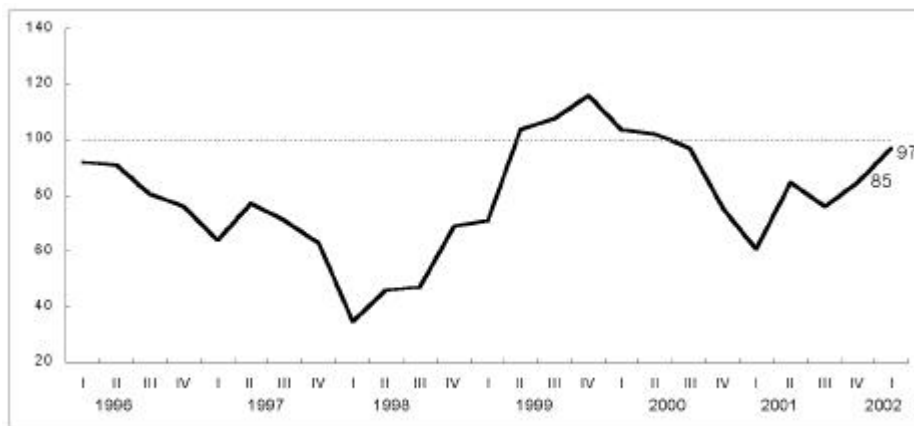
...

가

2002 1/4 BSI 97 2001 4/4 85

1751 1194 2945 , 2002 1/4
 BSI 가 (102 116), (100 108), (77 107),
 (68 103), 1 (86 102) (88 100) (77 89)
 , 2000 2/4 (103)

BSI



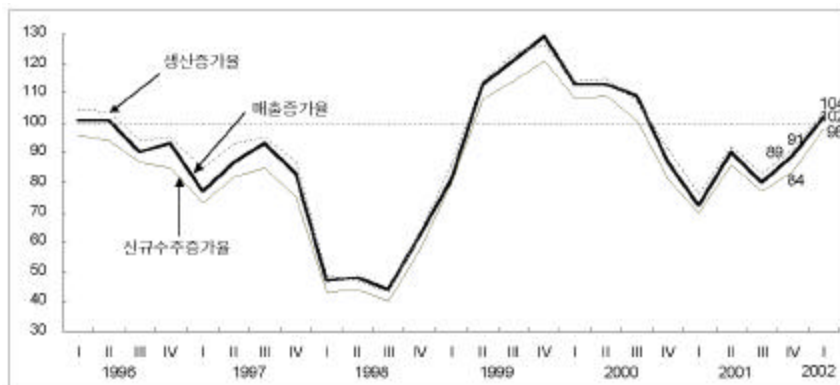
+ (%) - (%) + 100

가 BSI 2001 4/4 89 가 BSI(82 95)

가 BSI(89 104)

(86 81), (85 83)
 (78 123), (107 110), (108 109), (85 104)
 가 (81 114), 1 (99 114), (93 109),
 (71 106)

가 BSI



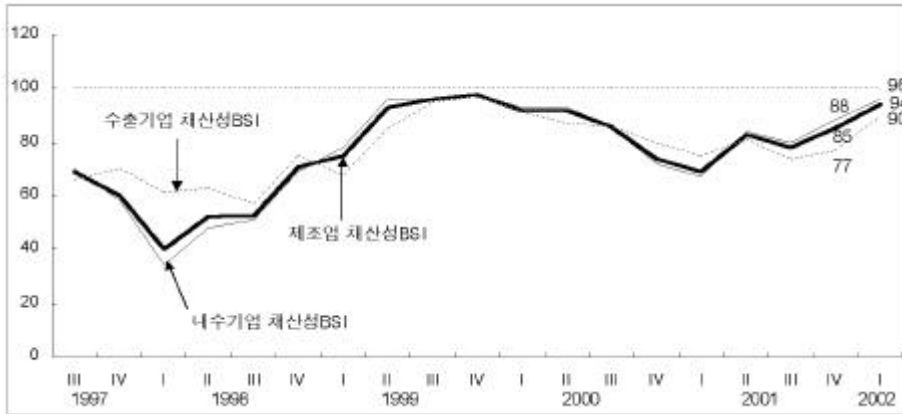
+ (%) - (%) + 100

BSI (109) 107 가
 (120 109), 1 (102 96) , (123 126), (110
 112), (111 111)

가 BSI 2001 4/4 90 103 가
 BSI (107) 105
 BSI (89) 97
 , (72 91), (70 84), (90 98) BSI가

BSI 2001 4/4 (85) 94 , (77
 90) (88 96) (90 104), 1 (83 98), (77 95)

BSI

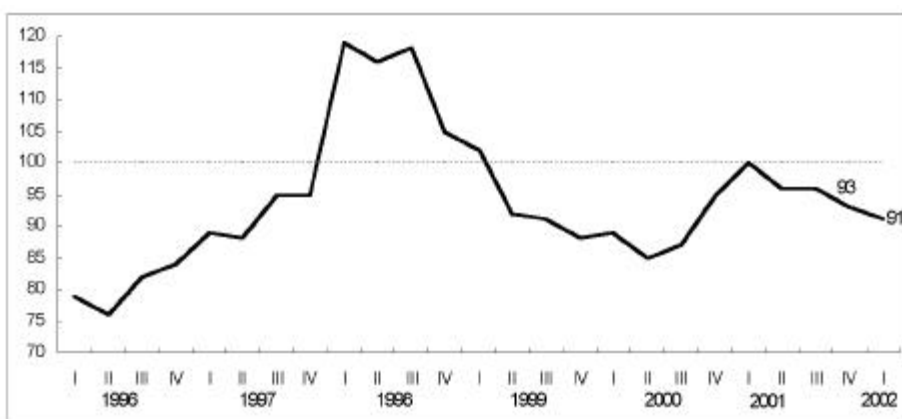


BSI 91 (93)

BSI

(100)

BSI



+ (%) - (%) + 100

2002 1/4 BSI / 93, 102 8-6 , /
 96 89 가 BSI 96 108 , / 100 104

, / 96 90
 가 BSI / 가 96 104 , 98 111 , /
 102 100 , 가 BSI 91 107 , / 92
 89 , / 107 105
 BSI 가 92 110 , 89 99 , / 84 89 .

BSI

구분	부분	1999.3/4	4/4	2000.1/4	2/4	3/4	4/4	2001.1/4	2/4	3/4	4/4	2002.1/4	2/4
업종BSI	석유정제/코크스	88	117	108	100	85	92	83	88	80	85	93(92)	107
	화학제품	112	121	110	101	85	73	66	93	78	86	102(95)	130
	고무/플라스틱	104	114	95	88	104	80	59	76	73	96	89(100)	127
마출증가율BSI	석유정제/코크스	112	142	108	113	112	115	108	100	92	96	90(96)	110
	화학제품	130	136	116	111	111	95	86	103	95	96	108(102)	131
	고무/플라스틱	109	123	90	97	101	77	69	83	71	100	104(100)	120
수출증가율BSI	석유정제/코크스	86	145	108	115	127	113	113	114	85	79	94(100)	100
	화학제품	110	114	110	114	110	101	91	103	93	91	102(104)	117
	고무/플라스틱	104	113	90	92	102	91	90	87	80	94	109(94)	114
내수판매	석유정제/코크스		142	108	105	112	96	100	91	96	92	100(92)	107
증가율BSI	화학제품		139	116	107	109	92	84	98	92	91	108(99)	130
	고무/플라스틱		138	97	112	106	85	70	83	71	93	108(92)	107
생산증가율BSI	석유정제/코크스	136	135	125	114	100	88	105	91	78	96	104(100)	114
	화학제품	134	136	122	114	110	97	85	96	88	98	111(104)	129
	고무/플라스틱	118	128	91	107	106	84	77	84	84	102	100(107)	116
신규수주	석유정제/코크스	125	126	108	100	100	73	85	81	95	82	96(100)	107
증가율BSI	화학제품	125	131	114	110	104	87	79	90	86	84	101(100)	122
	고무/플라스틱	108	119	89	95	102	80	68	84	79	89	95(96)	120
재고수준BSI	석유정제/코크스	104	100	92	105	108	112	109	104	113	104	100(96)	100
	화학제품	97	97	105	103	102	110	114	113	110	107	102(106)	100
	고무/플라스틱	109	99	115	111	106	107	123	118	116	111	111(111)	102
가동률BSI	석유정제/코크스		135	116	114	108	85	105	96	83	82	89(100)	111
	화학제품		139	123	113	108	97	79	96	86	91	107(100)	127
	고무/플라스틱		130	91	107	98	78	70	81	70	107	105(111)	111
생산설비BSI	석유정제/코크스	112	104	100	114	112	117	105	117	109	100	96(100)	93
	화학제품	101	98	99	99	99	102	107	105	104	106	104(109)	99
	고무/플라스틱	108	94	100	104	94	105	106	109	109	102	102(105)	100
설비투자BSI	석유정제/코크스	86	100	87	95	104	100	80	86	82	104	96(88)	96
	화학제품	102	108	104	106	104	91	98	101	97	87	101(93)	104
	고무/플라스틱	107	111	95	100	105	94	82	93	85	98	95(88)	100
채산성BSI	석유정제/코크스	96	100	104	109	77	77	83	92	80	82	110(96)	114
	화학제품	100	105	102	94	82	75	69	84	88	89	99(95)	110
	고무/플라스틱	94	86	81	75	89	69	64	87	80	84	89(89)	107
원재료	석유정제/코크스		161	152	150	152	169	162	152	118	92	96(92)	104
구입가격BSI	화학제품		136	133	131	137	147	144	142	108	88	102(102)	112
	고무/플라스틱		162	146	140	141	150	142	134	116	98	111(109)	123
판매가격BSI	석유정제/코크스	96	109	108	141	136	131	110	109	96	77	96(77)	100
	화학제품	92	96	103	95	92	97	93	93	89	87	88(93)	100
	고무/플라스틱	91	109	94	96	94	97	82	100	93	91	86(96)	100
고용BSI	석유정제/코크스	100	96	92	100	96	92	96	104	100	96	93(104)	93
	화학제품	91	83	90	86	88	89	94	95	98	90	95(96)	95
	고무/플라스틱	83	81	83	96	83	104	111	92	94	91	91(93)	91

, 2002 2/4 BSI 126 1/4 (90)
 (117 146), (92 143), 1
 (90 140), (100 138), (90 134)
 가 BSI 128 (94 126) (96 115)
 BSI 1/4 (109) 101 가

	2000.2/4	3/4	4/4	2001.1/4	2/4	3/4	4/4	2002.1/4	2/4
	102 (125)	97 (110)	75 (107)	61 (67)	85 (92)	76 (103)	85 (89)	97 (90)	(126)
	98 (124)	100 (111)	84 (113)	68 (84)	83 (97)	68 (105)	77 (87)	89 (88)	(118)
	103 (126)	96 (110)	72 (105)	59 (61)	86 (90)	79 (103)	88 (90)	100 (90)	(130)
가	113 (135)	109 (123)	87 (116)	72 (82)	90 (98)	80 (109)	89 (92)	102 (96)	(128)
가	115 (130)	107 (120)	91 (114)	76 (84)	92 (96)	83 (107)	91 (92)	104 (98)	(125)
가	109 (127)	101 (114)	81 (108)	70 (79)	86 (92)	77 (103)	84 (86)	98 (92)	(121)
가	92 (103)	86 (96)	74 (94)	69 (73)	83 (87)	78 (92)	85 (86)	94 (89)	(108)
*	92 (101)	93 (97)	89 (94)	88 (91)	93 (95)	84 (97)	84 (88)	91 (91)	(100)
	101 (99)	106 (101)	113 (103)	119 (113)	113 (110)	113 (106)	109 (108)	107 (109)	(101)
가	115 (130)	108 (121)	91 (113)	77 (84)	91 (97)	84 (106)	90 (92)	103 (96)	(125)
*	100 (98)	101 (101)	106 (101)	111 (109)	108 (108)	111 (106)	107 (110)	105 (107)	(101)
	105 (109)	101 (104)	93 (101)	91 (90)	94 (93)	89 (96)	89 (88)	97 (94)	(102)
*	85 (91)	87 (90)	95 (90)	100 (100)	96 (100)	96 (96)	93 (98)	91 (97)	(90)

+ () BSI

++ * BSI (%) - +100

가 BSI 1/4 (96) 125 가 가
, BSI 1/4 107 101 BSI 1/4 (94)