

<Chemicals & Inorganic Chemicals>

# NON-FERROUS METAL

94 가 2~3 가 ,  
가 가 가 가 ,  
가 가 가 90  
93 CIS 가  
가  
, 95 3~4%  
2~3% 가  
94 가  
가  
가 93 CIS  
가 1100 , 94 가 90  
94 1800 가 94  
가 50 140  
가 94 73% 가 2985  
95 LME 가 가  
가 가 가  
94 9 8000 가  
95 가 가  
1 가  
2/3가 가 가 93  
CIS 가 가 가  
461 94 634  
95 , , ,  
94  
가  
45% 65% 35%  
가  
30%

가 DC 가

25%

가 가

가 2

95 Alusaf가

가 95 가 2000

가 94 3 115 6 125 , 9 143 가 12 173

가 3 179 . 95 1 173 2 186

가 가

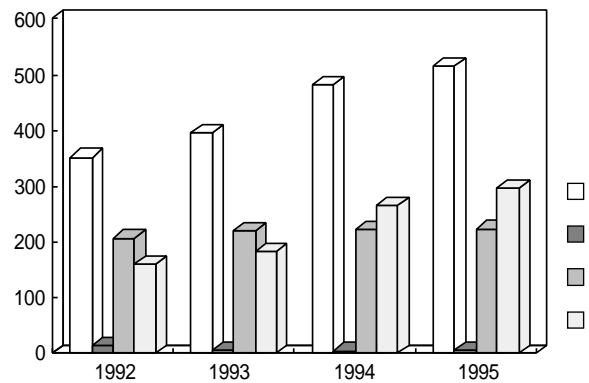
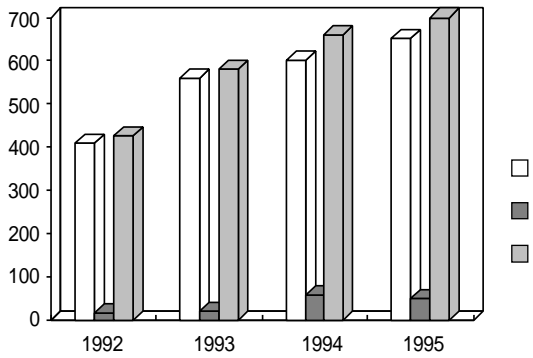
가 가

가 12% 가

가 8~10%

( : 1000M/T)

( : 1000M/T)



( : M/T)

	Virgin Ingot			Billet			Slab		
	Virgin Ingot	Billet	Slab	Virgin Ingot	Billet	Slab	Virgin Ingot	Billet	Slab
1988	1,919	13,005	1,033	15,957	1,293	13,945	831	16,069	887
1989	4,014	11,529	629	16,172	4,483	11,407	831	16,721	338
1990	178	13,506	-	13,684	305	12,598	-	12,903	1,119
1991.1~	-	-	-	-	-	-	-	-	-

21.7% 가

84%

24% 가 가

가 SOC

가 18% 가  
 94 5,6 가  
 가  
 가 가  
 93  
 가  
 가  
 94 가 93 18.7%  
 4900

( : M/T, 1000\$ )

	1992		1993		1994		1995					
							1	2	3			
	9,659	118,356	4,525	132,209	8,005	123,278	459	8,834	963	8,904	2,249	11,762
	12,506	245,460	7,083	241,164	10,159	233,142	595	22,035	1,831	22,568	2,072	31,081
	13,510	159,001	6,335	183,158	6,217	263,385	-	21,738	-	22,780	-	26,964
	27,948	376,365	11,329	364,312	14,331	574,359	-	62,031	-	71,371	4	82,165
가	76,052	38,694	88,616	43,516	109,999	54,617	7,266	4,475	9,377	4,680	10,524	5,396
	253,172	213,166	276,663	238,720	359,889	302,460	28,813	26,902	36,693	29,525	42,275	35,993
	99,221	316,051	99,476	358,883	124,221	441,280	7,725	35,047	10,340	36,364	12,773	44,122
	293,626	834,991	295,075	844,196	384,379	1,109,961	29,408	110,968	38,524	123,464	44,351	149,239
	3,305	41,919	572	32,306	1,488	35,490	81	5,513	243	4,420	120	5,442
	2,904	38,036	459	26,761	1,839	39,123	127	8,196	385	6,752	210	8,623
	15,889	425,478	20,305	579,343	59,384	689,325	7,914	65,869	11,573	61,858	6,581	68,355
	22,165	574,178	23,531	718,540	91,477	1,013,585	16,315	126,855	24,043	125,762	12,806	141,898
가	60,150	124,492	74,164	125,051	94,356	140,373	8,823	9,606	10,167	12,136	11,929	12,478
	253,594	507,908	310,797	479,695	393,094	535,682	37,024	44,929	44,514	55,638	51,807	59,222
	79,344	591,889	95,041	736,700	155,228	865,188	16,818	80,988	21,983	78,414	18,630	86,275
	278,663	1,120,122	334,787	1,224,996	486,410	1,588,390	53,466	179,980	68,942	188,152	64,823	209,743
	3,000	3,661	-	1,467	-	1,047	-	524	-	171	-	136
	660	1,424	-	647	-	401	-	236	-	119	-	94
	8,612	97,552	14,424	86,135	16,560	116,273	1,944	5,530	2,178	9,879	3,528	9,766
	4,919	59,591	6,789	43,119	9,415	65,237	1,315	4,037	1,468	7,021	2,331	7,098
가	140	163	337	197	303	335	17	5	5	7	12	20
	461	958	795	1,029	1,050	1,341	83	41	59	75	40	158
	11,752	101,376	14,761	87,799	16,863	117,655	1,961	6,059	2,183	10,057	3,540	9,922
	6,040	61,973	7,584	44,795	10,465	66,979	1,398	4,314	1,527	7,215	2,371	7,350
	19	24	33	192	34	122	-	-	-	-	17	23
	2	3	6	148	12	106	-	-	-	-	6	2
	59,628	26,244	50,389	47,508	86,232	73,433	2,938	9,300	6,679	5,845	4,204	6,094
	73,990	33,026	52,621	45,713	86,924	71,034	3,424	10,375	7,874	6,611	4,687	7,031
가	4,327	2,508	6,376	2,551	5,007	2,290	485	226	535	200	659	137
	12,578	5,791	13,391	5,062	9,277	4,990	1,026	347	1,100	493	1,234	364
	63,974	28,776	56,798	50,251	91,273	75,845	3,423	9,526	7,214	6,045	4,880	6,254
	86,570	38,820	66,018	50,923	96,213	76,130	4,450	10,722	8,974	7,104	5,927	7,397

( : M/T, %)

	1992	1993		1994	
	450,926	591,344	31.1	665,431	12.5
	45,887	20,305	27.8	59,384	192.5
	466,813	611,649	31.0	724,815	18.5
	0	0	-	0	-
	466,813	611,649	31.0	724,815	18.5
	330,449	375,373	13.6	456,660	21.6
	6,400	6,105	4.6	4,964	18.7
	338,607	377,574	11.5	464,614	23.1
	208,858	221,575	6.1	224,169	1.2
	129,749	155,999	20.3	240,445	54.1
	230,396	253,076	9.8	280,365	10.8
	52,880	42,572	19.5	76,160	85.9
	277,119	316,182	14.1	343,860	8.8
	252,655	269,683	6.7	272,219	0.9
	24,464	46,499	90.1	71,641	54.1
	155,143	162,554	4.8	187,847	15.6
	8,612	14,304	66.1	16,560	15.8
	163,755	717,858	8.0	204,407	15.6
	64,360	89,960	39.8	87,587	2.6
	99,395	86,898	12.6	116,820	34.4
	1,166,914	1,383,347	18.5	1,590,303	15.0
	83,779	83,286	0.6	160,068	92.2
	1,246,294	1,482,263	18.9	1,737,696	17.2
	525,873	581,218	10.5	583,975	0.5
	720,421	901,045	25.1	1,153,721	28.0

가 95

Esconida                      Candelaria                      1                      가                      가

가 94 3                      167 4000                      6 207 8000 , 9 214                      가 12                      257

7000                      가                      . 95 1 260 2000                      가 2                      248 5000 ,

3 248 6000                      ,                      가                      10%                      가가

가                      95                      가                      가                      가

가                      94                      95                      1 3000

가                      가                      93

13%                      가                      18%                      가

93 10.8% 가 28  
 94 3 8000 가 93 54% 가  
 93 3.6% 가 540 가 93 86% 가 1200  
 , 가 94 3 96 3000 , 6 95 4000 , 9 90 6000  
 12 105 8000  
 95 1 102 1000 , 2 105 5000 가 3 95 7000  
 가 94 95 , ,  
 가 10% 가  
 95 20%  
 , 94 2

( : M/T)

1992	208,858	200,700	-	6,400	207,100	6,379
1993	221,575	210,664	8,710	6,105	225,479	2,475
1994	224,169	216,215	-	4,964	221,179	5,465
1995.1	20,168	19,761	-	-	19,761	5,872
2	18,115	20,388	-	-	20,388	3,599
3	20,156	21,880	-	-	21,880	1,875

LME

( : M/T)

	1992.12	1993.12		1994.12		1995.3
	1,526,650	1,808,275	18.5	1,691,500	6.5	1,322,725
	342,400	581,950	70.0	297,325	48.9	266,050
	457,525	906,700	98.2	1,182,300	30.4	1,072,100
	212,550	303,650	42.9	347,200	14.3	306,325

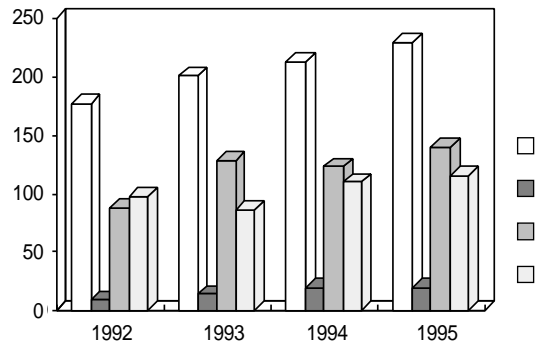
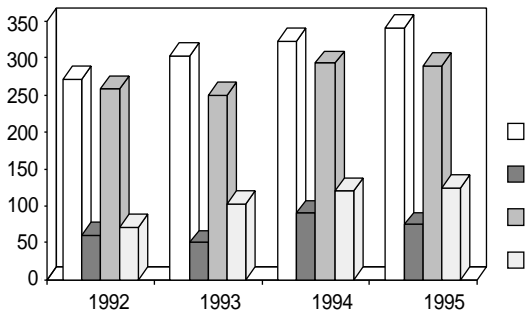
( : M/T)

1992	252,655	119,604	86,328	52,880	258,812	5,075
1993	269,683	120,461	86,116	42,572	249,149	25,609
1994	271,110	128,296	79,364	79,160	286,820	9,899
1995.1	25,434	12,858	6,756	2,900	22,514	12,819
2	24,748	11,202	7,109	6,566	24,877	12,690
3	24,524	13,243	7,226	4,114	24,583	12,631

93 2.6% 8 7000  
 60% 가  
 40%  
 가  
 88 7 93 5  
 가 94  
 4 3000  
 95 가 94 2%가 가  
 95 680  
 가 94 3 47 , 6 55 , 9 57 , 12  
 64  
 95 1 62 , 2 64 3 57  
 가 가  
 94 8 7000 95 12  
 가  
 95

( : 1000M/T)

( : 1000M/T)

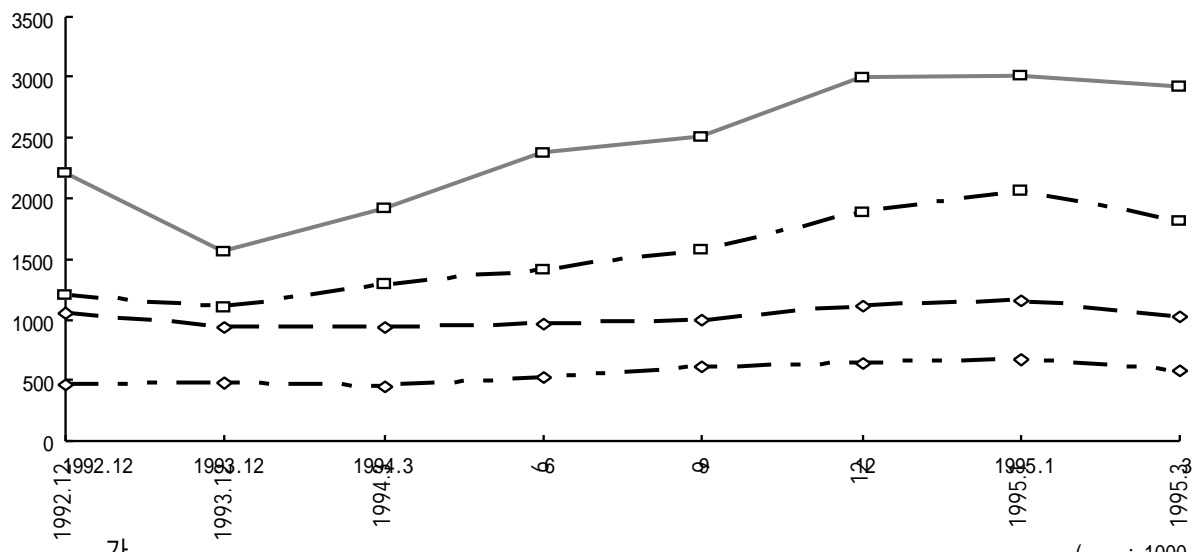


( : M/T)

1992	63,377	33,674	19,610	8,195	61,479	4,746
1993	89,976	47,318	28,859	13,730	89,907	4,815
1994	86,457	50,454	22,990	15,646	89,090	2,182
1995.1	11,004	3,672	2,980	1,860	8,512	3,634
2	10,135	4,705	2,785	2,140	9,630	4,139
3	11,611	5,283	2,866	3,440	11,589	4,161

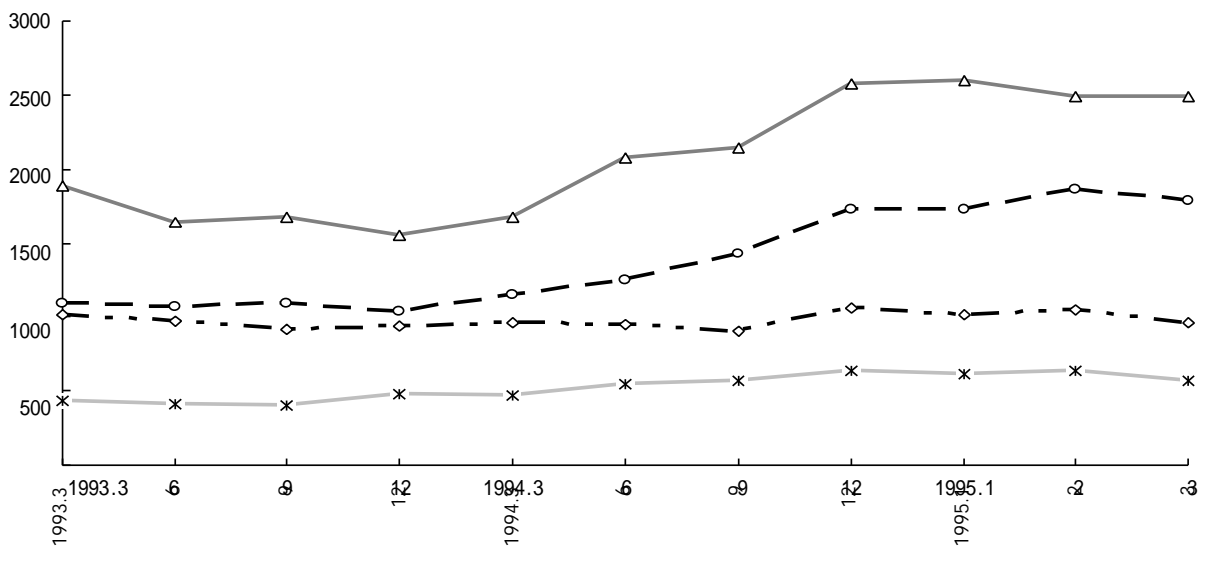
가

( : \$/MT)



가

( : 1000 /MT)



가가

가

가가

R&D

, 가

가

가

가

( )

FOIL STOCK	, , AL- , FOIL	A1236, A1200	H14	0.35t	COIL
FIN STOCK	, AIRCON	A1100, A3003	H18	0.35~0.5t	COIL
CLAD	, BLAZING	A4343, A3003 A4343	H18		COIL
CANSTOCK	BODY, END, TAB, CAN	A3004, A5182, A5082	H38, H19	0.29~0.32t	COIL, SHEET
P.P.CAP	, ,	A8011, A1050, A5052	H14, H16	0.21~0.25t	SHEET
COSMETIC CAP		A1050, A1100,	O, H12	0.4~1.0t	SHEET
	, , CLAD,	A3003, A3004, A1050	O, H12	0.4~5.0t	CIRCLE
	, BODY, SUN-ROOF, BONET	A1050, A5082, A2017	O, H38	0.1~2.0t	COIL, SHEET
CONTAINER	CONTAINER, VAN TRUCK	A5052, A3004,	H34, H38	1.27~1.6t	COIL
	가 , , LNG TANK	A5083, A3003, A5182	O, H38	0.8~20.0t	SHEET, PLATE
	, ,	A2024, A7017, A7075	T651		SHEET, PLATE
	, ,	A5083, A5052, A2024	O, H38	0.8~45.0t	SHEET, PLATE
	, MOTOR CYCLE	A5005, A5052, A5083	O, H38		SHEET,
	CURTAIN WALL, , PANEL	A3003, A5005, A1050	O, H16	0.4~5.0t	COIL, PLATE
	, ,	A5005, A3003, A1050	H14, H38	1.0~3.0t	COIL, SHEET
	, ,	A1235, A1050, A3003	H14, H16	0.3~1.0t	COIL, SHEET
	, ,	A1050, A1060, A3003	O, H18	0.4~2.0t	COIL
	, ,	A1050, A1080,	H16, H18		COIL, SHEET
가	EVA, PLATE, HEAT SINKER	A1050, A1100, A1200	O, H18	0.4~5.0t	COIL, SHEET
	SORTER,	A5052, A2017,	H34, H16	0.4~0.8t	COIL, SHEET
		A1050, A1100,	O		COIL, SHEET
	P.S ,	A1050, A1100,	H18	0.25~0.5t	COIL, SHEET
	, ,	A1050, A1100, A5005	H18	0.25~3.0t	SHEET
BLIND STOCK	BLIND STOCK	A5052, A5083,	H19, H39	0.25~0.2t	COIL, PLATE
	, ,	A2024, A7075,	T6		SHEET, PLATE
	, ,	A1050 A3003	O, H16		COIL

가

< 1995/6/15 >