

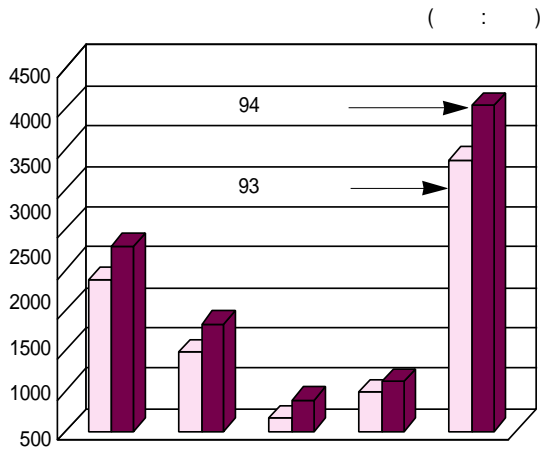
< >

가

?

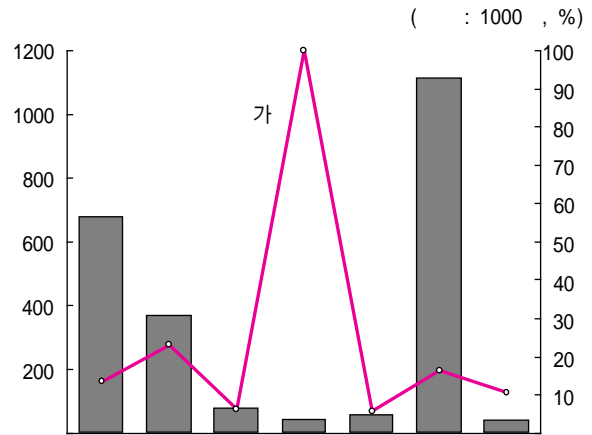
93 6 93 63 8500 .
 93 . 가가 . 6 6000
 10.4% 92 131% .
 94 93 23.6% 가 34 2550 , 36.7% 가 23 8000
 94 80 79
 60 4 3 .
 . 가 .
 91 가 가 9.7%, 3.3% 93
 30.7% 24.5% 가 .
 , 8 6361 93 6 8300 26.4% 가 5 94
 22.7% 가 2 2900 ,
 36.9% 가 1 3265
 3814 135% , 28.5% 가 6082 ,
 20% 가 4 300 .

【 1】 5 94



【 2】

(1994)

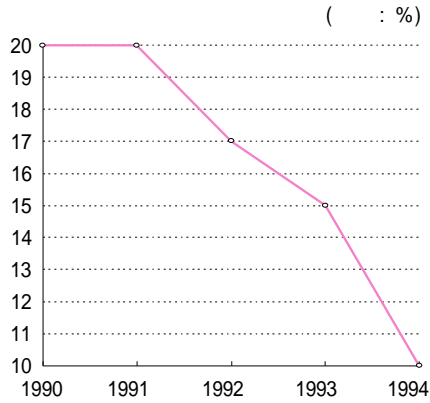


8 6300
 93 2000cc 가 , 92 48.2%, 93
 62.2% 3000cc 93 20.6% 94 13.3% 2000cc 3000cc
 93 17.1% 9.1% .
 2000cc .

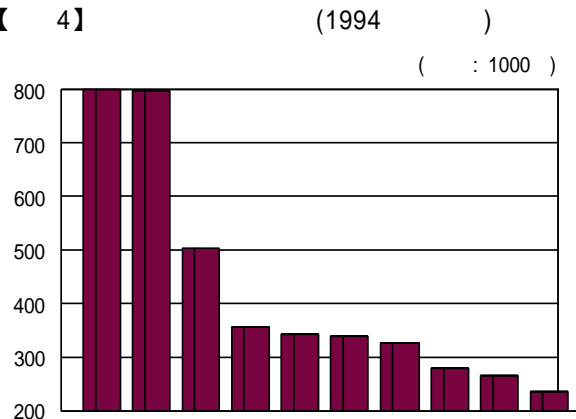
2000cc 94 9319
3000cc 3500cc

가 2000cc 가
가 本田 3200cc
3.5

【 3】



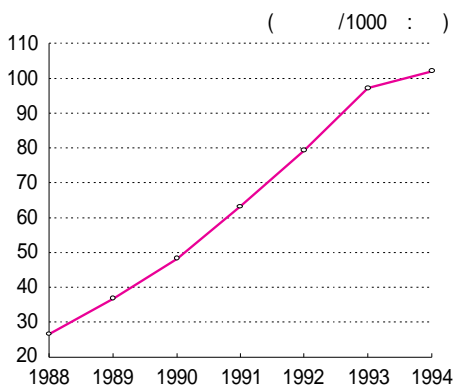
【 4】



BMW500 가 5000
91 20%
가
94 6.5%
94 1 9000
가
93 9

가 3.5 E
4000 가
92 17%, 93 15%, 94 10%
가 . 93 4.9%
가
400
94 1000

【 5】



. 94 6 가
396 , 375
가 19 가
13 , 6
30 , 22 , 11
1005 , 975 ,
805
22 , 21 ,
12 136 ,

69 , 65
 , 가 200 가
 3 1
 6 301 6000 1 5080 2227
 14.8%
 24 30.2% 12.2% 가
 93 5 R&D 4.6%, 5860
 , 가 CFC

< 1994/9/1 >