

“ ”

,

2001 4 2
가

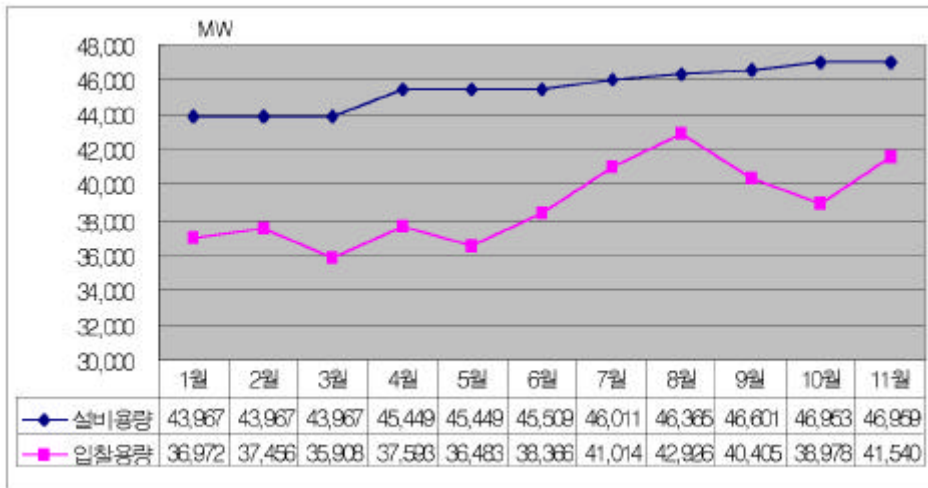
가

6

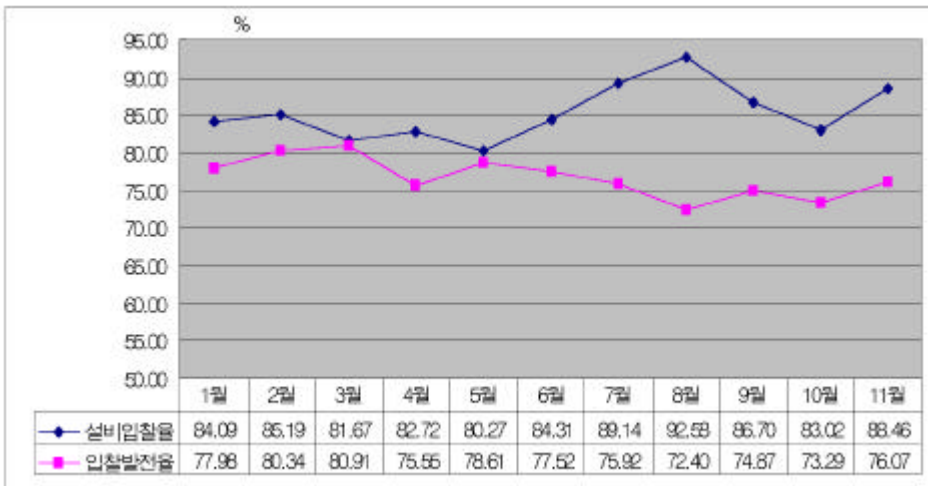
6

가

가



2001 11 5 25 20

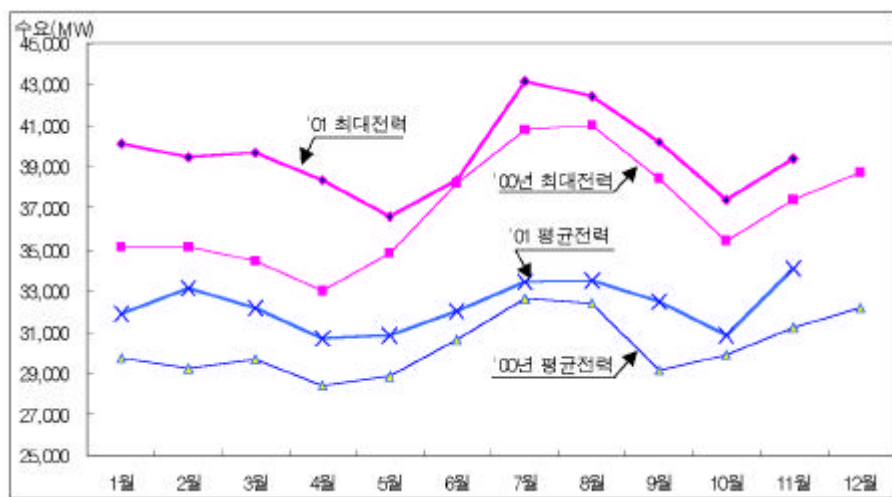


, 2001 11 2 2753GWh 7.0%(1490GWh) 가 ,
 가 1 9007GWh 84% .
 가 46.95 /kWh 0.61 /kWh 41.09 /kWh, 76.67 /kWh
 1 683 574 가 가 7810 (73.11%), 2873
 (26.89%) .

(kW)	1,425	557	639	685	607	750	33	4,696
(%)	30.35	11.85	13.61	14.58	12.94	15.97	0.70	100
(GWh)	9,313	3,423	4,233	4,313	3,633	4,905	89	29,909
(%)	31.14	11.44	14.15	14.42	12.15	16.40	0.30	100
(GWh)	9,270	2,714	2,302	2,740	2,847	2,838	42	22,753
(%)	40.74	11.93	10.12	12.04	12.51	12.47	0.18	100

+ : (2 kW), (6 kW), (0.3 kW),
 (660kW), (24 kW), (0.65 kW)

, 2001 11 5.2% 가 3936 KW ,
 9.3% 가 3407 KW 가 가 가



가 4722 KW 4963 KW , 785 -1103 KW 20-29%